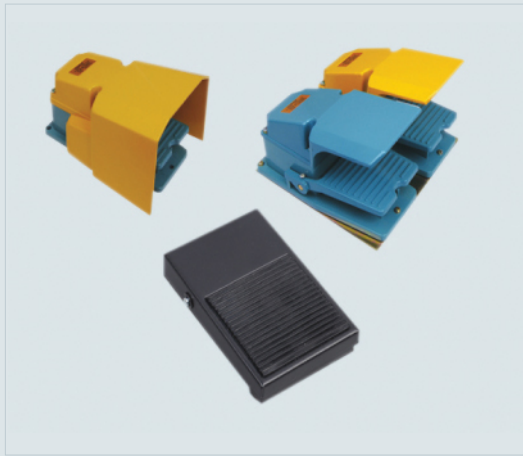


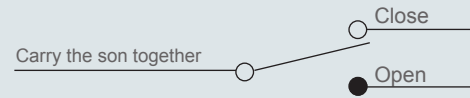
CFS Foot Switch



Features

- Metal series shell
- Plastic series shell

Contact Form



Features

Designation	Model	Rating	Type of switch enclosed & contact arrangement	Cable type / length	Contact	Action force	Material of Rind
Mini foot switch Front end push	FS1	10A 250VAC	CMV-100D	0.5mm 2,3C +/-1 meter	1A1B	0.9kg	Iron
	FS1-2C	10A 250VAC	CMV-100D	0.5mm 2,3C +/-2 meters	1A1B	0.9kg	
Protective guard foot switch	CFS-302	15A 250VAC	CM-1704	Accessory: Cable gland (No cable)	1A1B	3.2kg	Aluminum Cast
	CFS-304	15A 250VAC	CM-1704 * 2		2A2B	3.2kg	
	CFS-502	15A 250VAC	CM-1704		1A1B	3.2kg	
	CFS-504	15A 250VAC	CM-1704 * 2		2A2B	3.2kg	
	CFS-602	15A 250VAC	Button spring type		2*1A1B	2.8kg	
	CFS-702	15A 250VAC	CM-1704		2*1A1B	3.2kg	

