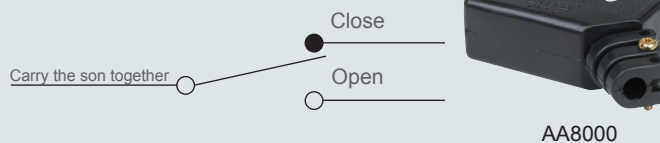




Features

- Variety of actuators, action position is adjustable (such as CM1701)
- High switch on and off capacity (15A)
- High accuracy
- Wide range of operation speed
- Each type of CM series has solder terminal, screw terminal and tab terminal are selective
- Add A for solder terminal, add C for tab terminal, blank for screw terminal

Contact Form



AA8000

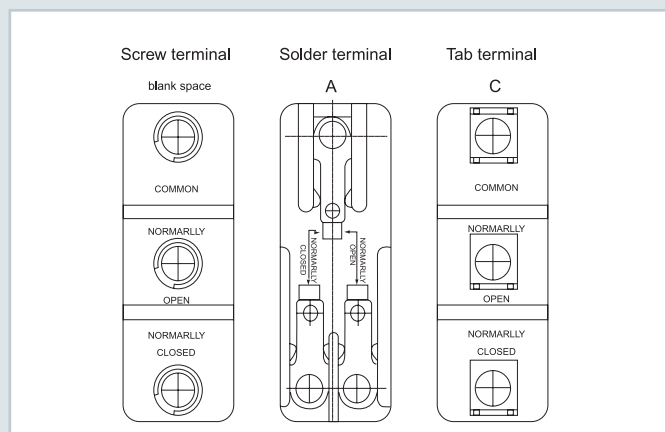
Ratings

Rated voltage	Noninductive Load (A)				Inductive Load (A)				Inrush Current	
	Resistance Load		Lamp Load		Inductive Load		Motor Load			
	NC	NO	NC	NO	NC	NO	NC	NO	NC	NO
125VAC	15	3	1.5	15	5	2.5	30 以下 max.	15 以下 max.		
250VAC	15	2.5	1.25	15	3	1.5				
500VAC	3	1.5	0.75	2.5	1.5	0.75				
8VDC	15	3	1.5	15	5	2.5				
14VDC	15	3	1.5	10	5	2.5				
30VDC	6(2)	3	1.5	5	5	2.5				
125VDC	0.4	0.4	0.4	0.05	0.05	0.05				
250VDC	0.2	0.2	0.2	0.03	0.03	0.03				

Characteristics

Operation speed	0.01mm-1m/sec
Operating frequency	Mechanical: 240 operations/min. Electrical: 20 operations/min.
Contact resistance	15mΩ max. (initial value)
Insulation resistance	100mΩ min. (at 500VDC)
Dielectric Strength	1000VAC, 50/60 Hz for 1 minute between terminals of the same polarity
	1500VAC, 50/60 HZ for 1 minute between current-carrying and non-current-carrying metal parts
	1500VAC, 50/60 HZ for 1 minute between each terminal and ground
Vibration	10-55Hz, 1.5mm double amplitude
Shock	Mechanical durable: 1,000m/Sec ² (about 100G'S) Malfunction: 300m/Sec ² (about 30G'S)
Ambient temperature	General purpose type: -25°C to +80°C (With no icing), Sealed type: -15°C to +80°C (With no icing)
Humidity	General purpose type: 85%RH max., Sealed type: 95%RH max.
Life	Mechanical: 20,000,000 operations/min. Electrical: 500,000 operations/min.
Weight	About 22 to 58g

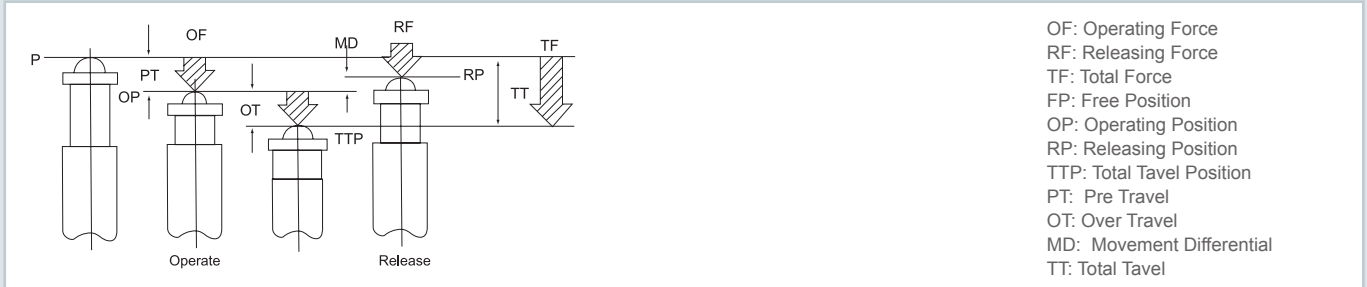
Terminal Type



Operating Characteristics

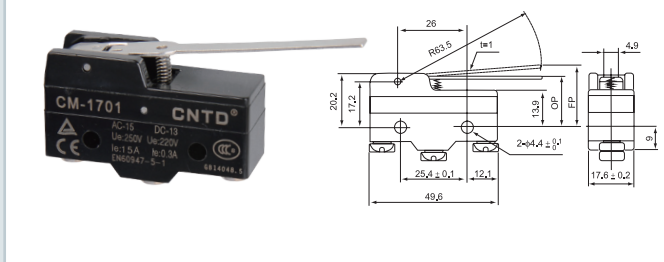
Models	CM1300	CM1301	CM1303	CM1305	CM1306	CM1307	CM1308 CM1308X	CM1309	CM1701 CM1706	CM1702	CM1703	CM1704	CM1705	CM1743
OF (Max.)	350g	300g	300g	350g	350g	350g	350g	350g	70g	160g	100g	160g	10g	160g
RF (Min.)	114g	50g	50g	114g	114g	114g	114g	114g	14g	28g	22g	42g	3g	42g
PT (Max.)	0.4mm	4mm	4mm	0.4mm	0.4mm	0.4mm	0.4mm	0.4mm	10mm	5mm	7.1mm	2.7mm	20mm	2.7mm
OT (Min.)	0.13mm	1.6mm	1.6mm	1.6mm	1.6mm	5.5mm	3.58mm	3.58mm	5.6mm	2mm	4mm	2.4mm	5.6mm	2.4mm
MD (Max.)	0.05mm	1.3mm	1.3mm	0.05mm	0.05mm	0.05mm	0.05mm	0.05mm	1.27mm	1mm	1.02mm	0.5mm	3mm	0.5mm
FP (Max.)		20.6mm	31.8mm						28.2mm	24.8mm	36.5mm	32.5mm		43.6mm
OP(mm)	15.9 ± 0.4	17.4 ± 0.8	28.6 ± 0.8	28.2 ± 0.5	21.5 ± 0.5	21.8 ± 0.8	33.4 ± 1.2	33.4 ± 1.2	19 ± 0.8	19 ± 0.4	30.2 ± 0.8	30.2 ± 0.4	19 ± 0.8	43.1 ± 0.8

Operating Characteristics

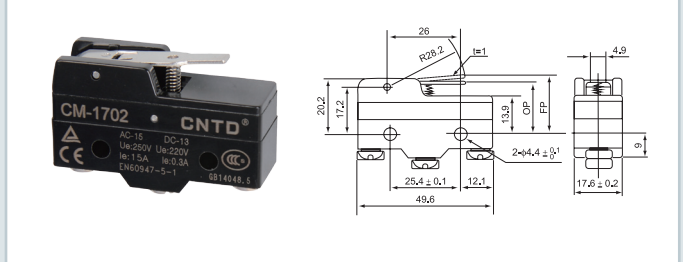


Appearance and Dimension

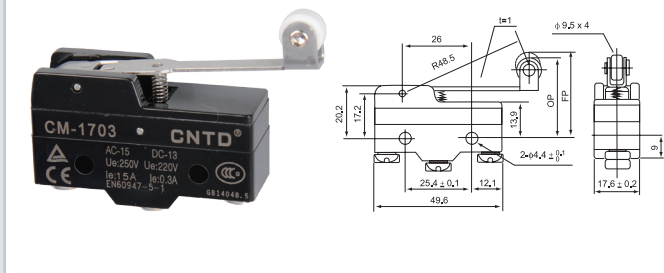
CM-1701



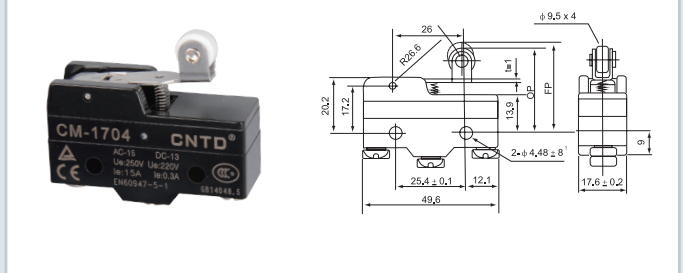
CM-1702



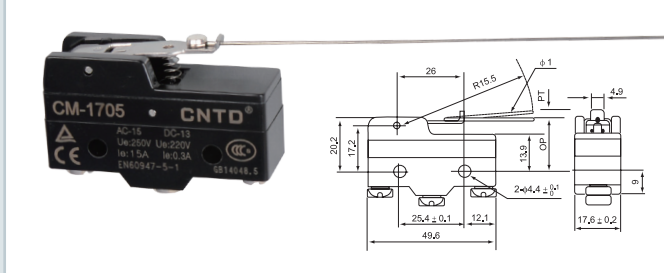
CM-1703



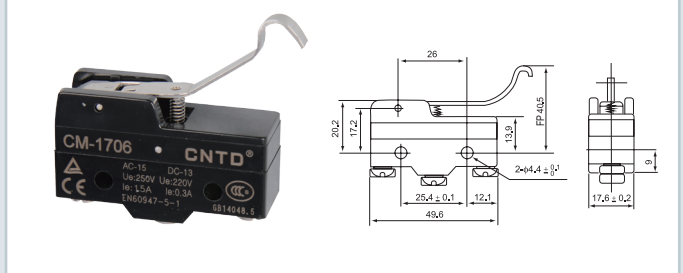
CM-1704



CM-1705

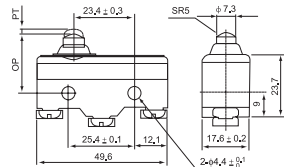


CM-1706

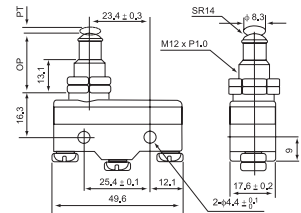


Appearance and Dimension

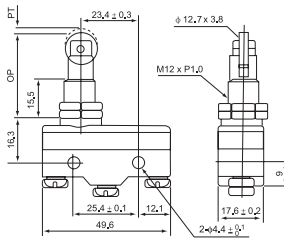
CM-1306



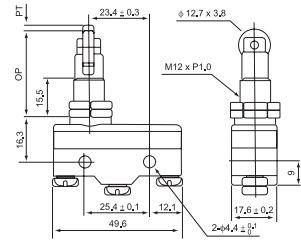
CM-1307



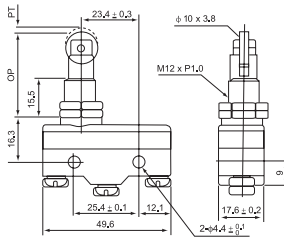
CM-1308



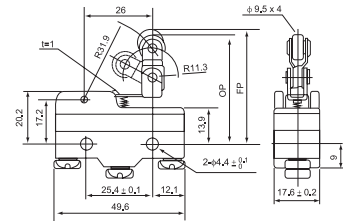
CM-1309



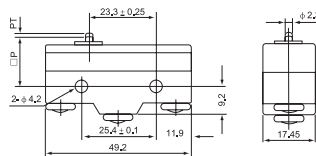
CM-1308X



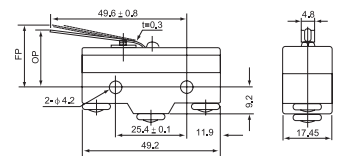
CM-1743



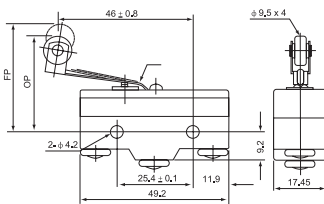
CM-1300



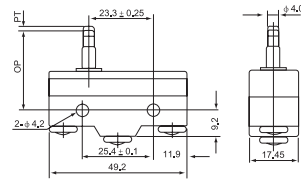
CM-1301



CM-1303



CM-1305



CBFM-25(30)



CBLM-25(30)



CBMM-25(30)



CSSM-25(30)

