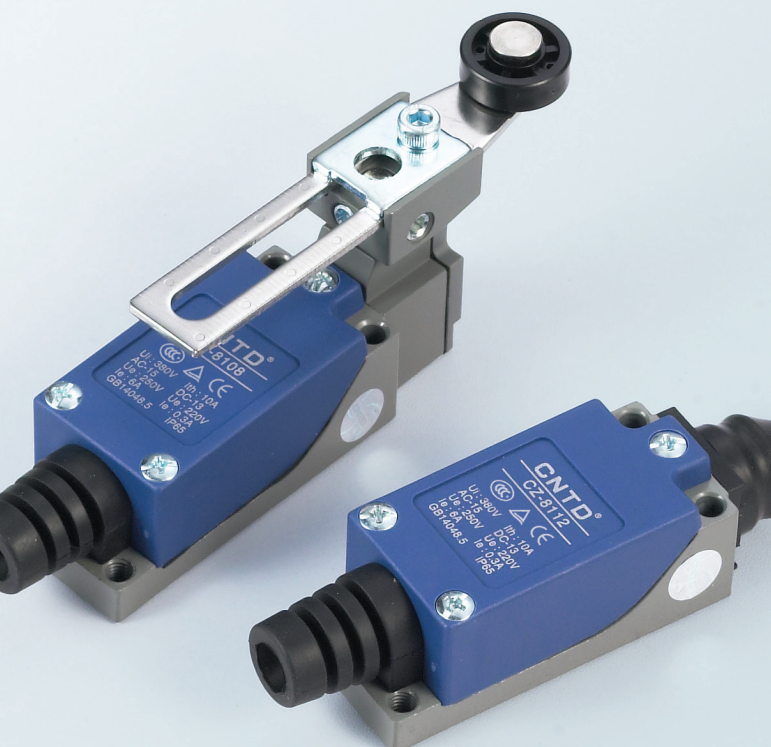


# CZ-8 Limit Switch



## Features

- Double circuit type of limit switch
- Highly rigid construction, consists of intensive plastic and aluminum cast (Head and cover snugly fit in box)
- Small volume, water-proof and oil-proof construction
- Built-in basic switch with double spring mechanism, longer mechanical life
- Smooth operation with greater OT
- Easy-to-wire circuit opening design
- Wide variety of actuators, easily use

## Contact Form



## Ratings

Rated voltage	Noninductive Load (A)				Inductive Load (A)			
	Resistance Load		Lamp Load		Inductive Load		Motor Load	
	NC	NO	NC	NO	NC	NO	NC	NO
125VAC	5	5	1.5	0.7	3	3	2	1
250VAC	5	5	1	0.5	3	3	1.5	0.8
8VDC	5	5	3	3	5	4	3	3
14VDC	5	5	3	3	4	4	3	3
30VDC	5	5	3	3	4	4	3	3
125VDC	0.4	0.4						
250VDC	0.2	0.2						
Inrush Current	N.C.:24A N.O.:12A N.C: below 24A, N.O: below 12A							

NOTES: 1. Inductive load has a power factor of 0.4 min.(AC) and a time constant of 7 msec. max.(DC).  
2. Lamp load has an inrush current of 10 times the steady-state current, while motor load has an inrush current of 6 times the steady-state current.  
3. Product with spring, its usable range of operating part is within one third of the whole spring length from the front end of spring.

## Characteristics

Operation speed	0.5mm-50cm/sec
Operating frequency	Mechanical: 120 operations/minute Electrical: 30 operations/minute
Contact resistance	25mΩ max. (initial value)
Insulation resistance	100mΩ min. (below 500VDC)
Dielectric strength	1000VAC, 50/60 Hz for 1 minute between terminals of the same polarity
	1500VAC, 50/60 Hz for 1 minute between current-carrying and non-current-carrying metal parts
Dielectric strength	1500VAC, 50/60 Hz for 1 minute between each terminal and ground
Shock	1500VAC, 50/60 Hz for 1 minute between current-carrying and noncurrent-carrying metal parts
Ambient temperature	-5~+ 65F
Humidity	95% RH
Life	Mechanical: 10,000,000 operations above Electrical: 500,000 operations above
Weight	About 130 to 190g
Degree of protection	IP65

## Operating Characteristics

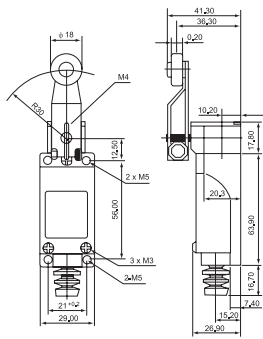
Models	CZ-8104	CZ-8108	CZ-8107	CZ-8111	CZ-8112/8122	CZ-8166/8167/8168/8169
OF (Max.)	750g	750g	750g	900g	900g	150g
RF (Min.)	100g	100g	100g	150g	150g	-
PT (Max.)	20°	20°	20°	1.5mm	1.5mm	30mm
OT (Min.)	50°	50°	50°	4mm	4mm	-
MD (Max.)	12°	12°	12°	1mm	1mm	-
OP	-	-	-	26 ± 0.8mm	37 ± 0.8mm	-



# CZ-8 Limit Switch

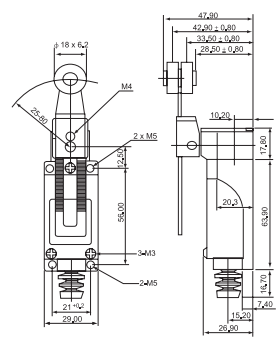
## Appearance and Dimension

CZ-8104



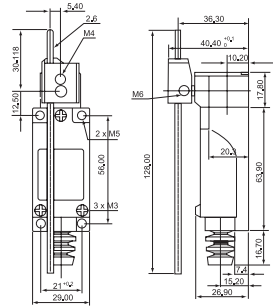
Optional Stainless steel idler wheel

CZ-8108

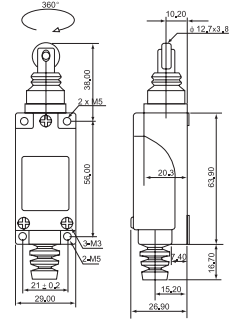


Optional Stainless steel idler wheel

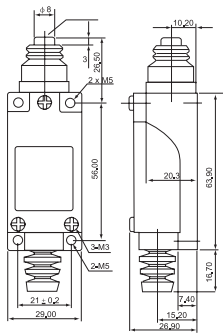
CZ-8107



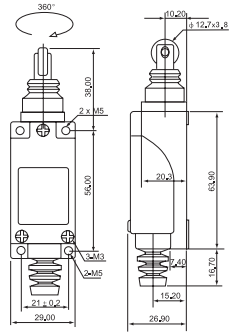
CZ-8112



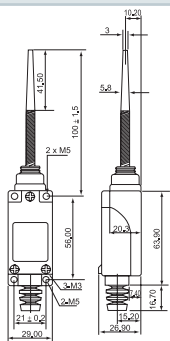
CZ-8111



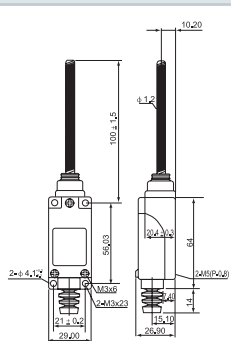
CZ-8122



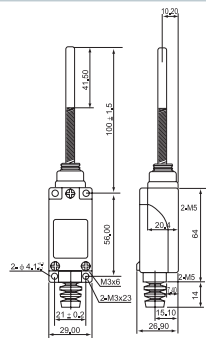
CZ-8166



CZ-8167



CZ-8168



CZ-8169

